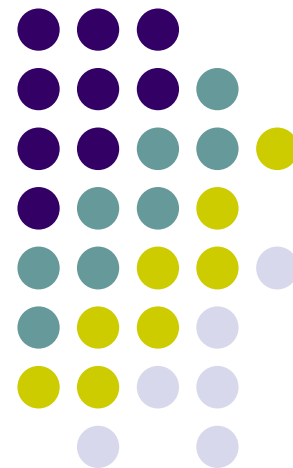


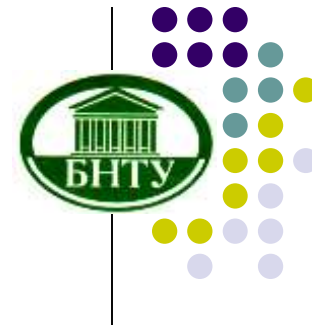


BELARUSIAN NATIONAL TECHNICAL UNIVERSITY

BNTU was founded in 1920



BELARUSSIAN NATIONAL TECHNICAL UNIVERSITY



- **Leading Higher Engineering-Technical Education Institution in the National Educational System of the Republic of Belarus**



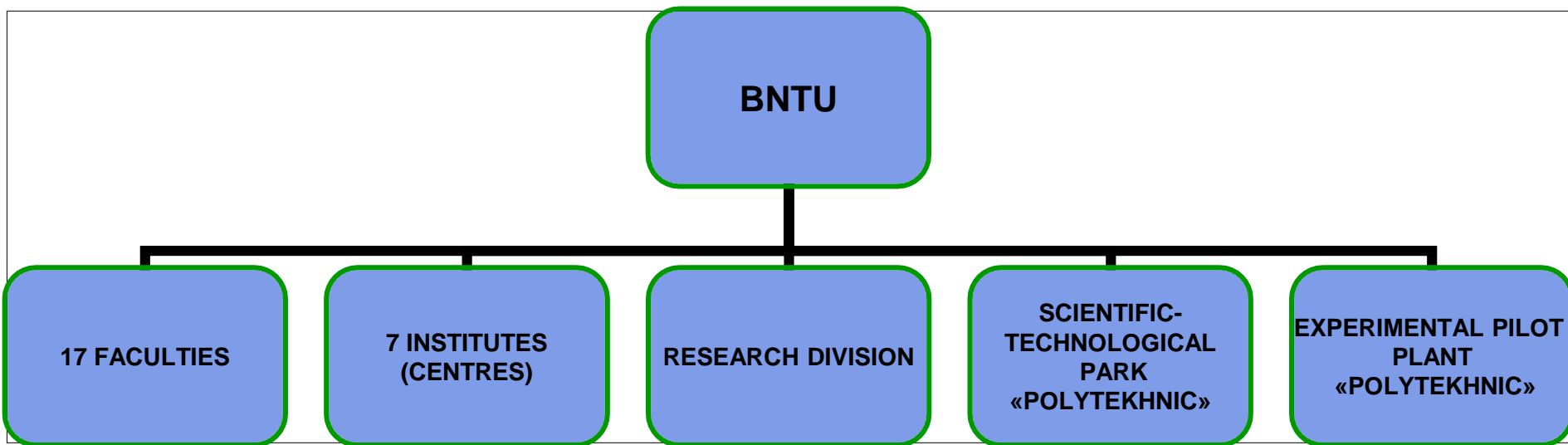
- **Basic organization of member states of the Commonwealth of Independent States (CIS) in higher engineering education**



BELARUSSIAN NATIONAL TECHNICAL UNIVERSITY



MAIN UNIVERSITY STRUCTURE



BELARUSSIAN NATIONAL TECHNICAL UNIVERSITY

17 FACULTIES:

Automotive and Tractor
Mining and Engineering Ecology
Mechanical Engineering
Mechanical and Technological
Marketing, Management and Entrepreneurship
Power Engineering
Information Technologies and Robotics
Management Technologies and Humanities
Engineering-Pedagogical
Power Engineering Construction
Architecture
Civil Engineering
Instrumentation Engineering
Transport Communications
Military Engineering
International Cooperation
Sport-Technical



АВТОТРАКТОРНЫЙ ФАКУЛЬТЕТ



МЭФ



ФММП



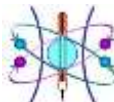
ФИТР



МТФ



АФ



СФ



ИФ



МЭФЭ



ЭФ



ММФ



ЭФСТ



АФ



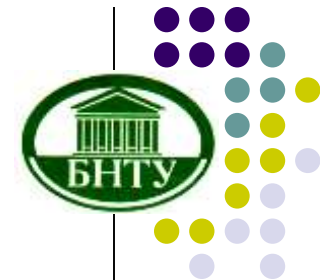
СТРОИТЕЛЬНЫЙ ФАКУЛЬТЕТ



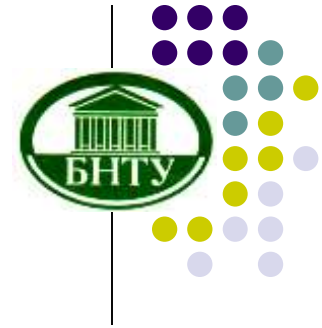
ИФ



ИФ



BELARUSSIAN NATIONAL TECHNICAL UNIVERSITY



TRAINING OF SPECIALISTS (1st cycle):

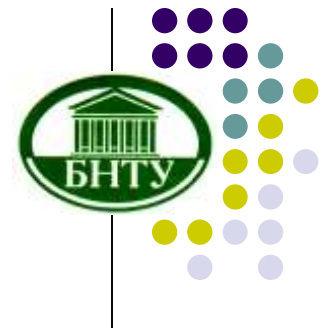
- **112** departments and **59** branches at enterprises
- more than **120** specialties and specializations
- full-time and part-time education from **4** to **6** years, approx. **33 000** students
- The University comprises approx. **1700** lecturers

MSc-STUDENT TRAINING (2nd cycle):

- full-time and part-time education
- Training covers **55** specialties
- Duration of education – **1-1.5** year
- Annually the University enrolls approx. **400** Master degree students



BELARUSSIAN NATIONAL TECHNICAL UNIVERSITY



TRAINING OF POST-GRADUATE STUDENTS, PhD (CANDIDATE OF SCIENCE):

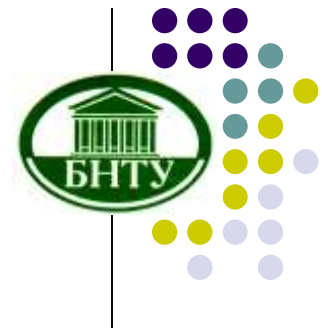
- Full-time (**3** years) and part-time (**4** years)
- Training covers **55** specialties of the following **7** science branches: physical and mathematical; biological; engineering; economic; pedagogical, architecture and natural sciences

TRAINING OF DOCTORS OF SCIENCES (D.Sc):

- Training covers **34** specialties of the following **6** science branches: physical and mathematical, biological, engineering, economic, architecture and natural sciences



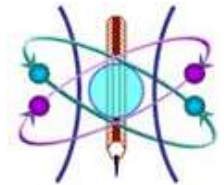
Instrumentation Engineering Faculty



**Total 1600 full-time students and 1000 correspondence students,
6 engineering departments and 10 Specialties of the 1st cycle**

- **"Device Design and Manufacture" Department**

Mechanical and Electromechanical Instruments and Devices
Biotechnical and Medical Devices and Systems
Jewelry Manufacture Technology and Equipment



- **"Standardization, Metrology and Information Systems" Department**

Metrology, Standardization and Certification

- **"Laser Devices and Technology" Department**

Optoelectronics and Laser Devices and Systems

- **"Information and Measuring Technology" Department**

Information and Measuring Technics
Technical Support for Security

Methods and Devices for Quality Assurance and of the Objects State Diagnostics

- **"Micro- and Nanotechnology" Department**

Micro- and Nanosystems' Technics

Technology of Materials and Components of Electronic Technics



Laser Devices and Technology Department

Specialties

Training of specialists (1st cycle), total 150 students

- **Optoelectronics and Laser Devices and Systems**

Training of MSc (2nd cycle). Dept. enroll 3-5 students every year

- **Optical and Optoelectronic Devices and Complexes**

Training of PhD (3rd cycle), total 10 PhD students in 2013-2014

- **Optical and Optoelectronic Devices and Complexes**
- **Optics**
- **Laser physics**

Training of DSc (4th cycle).

- **Optical and Optoelectronic Devices and Complexes**
- **Optics**
- **Laser physics**



Information Technologies and Robotics Faculty

The Faculty includes **6** departments:

- Computer Engineering and Automated Systems Software
- Computer Aided Design Systems
- **Robotic Systems – (target Department)**
- Electric Drive and Automation of Industrial Installations and Technological Complexes
- Higher Mathematics No.1
- Technical Physics

Robotic Systems Department specialties

1st cycle:

- **Automation of Technological Processes and Production**
- **Industrial Robots and Robotic Systems**

2nd, 3rd, 4th cycles:

- **Automation of Technological Processes and Production**



Cooperation of Target Departments with Enterprises and Institutions



Close cooperation with more than **30** enterprises and institutions

- JSC “Peleng” – branch of department
- Belarusian Optical & Mechanical Association BelOMA
- R&D Center “LEMT” BelOMA
- Institute of Physics National Academy of Science Belarus
- JSC “KBTEM-OMO”
- JSC “Solar LS”
- etc.

BNTU introduces national credit accumulation system for the 1st and 2nd cycles.

